



**IMMUNIZE
KANSAS
COALITION**

***Working together to protect all Kansans
from vaccine-preventable diseases.***



***View IKC's
Webpage***



@immunizekscoalition



@immunizekscoalition



@ImmKSCoalition



ANNUAL GATHERING

August 1, 2025

Virtual Meeting



**IMMUNIZE
KANSAS
COALITION**



WELCOME

Karen Braman

Chair



Brief Remark - Outgoing Chair

Brandan Kennedy

Immediate Past Chair

Nomination Committee Report + Recognition of Outgoing Officers

Amanda Applegate
Nomination Committee Chair

*Thank
you!*

Nomination Committee

- Amanda Applegate, IKC Past Chair
- Brandan Kennedy, IKC Chair
- Stephania Lopez, IKC Education and Awareness Co-Chair



OUTGOING OFFICERS



For your leadership!



Kimberly Whitaker, RN

Treasurer / Secretary



Jaclyn Miller, MLSW

Health Equity Team Chair



Heather Braum, MLS

Policy Team Chair

TRANSITIONING OFFICERS



Chair to Immediate Past Chair

Brandan Kennedy,
MD, FAAP, FABPM



Incoming Chair to Chair

Karen Braman, RPh,
MS



Immediate Past Chair to At-Large Representative

Amanda Applegate,
PharmD, BCACP



Assumed additional role: Secretary-Treasurer

Sarah Good, MHA

Thank you to our past Board Members for your service, and welcome, incoming Board Members!

Position	2024-2025 Board Member	2025-2026 Board Member
Chair	Brandan Kennedy, MD, FAAP, FABPM	Karen Braman, RPh, MS
Chair Elect	Karen Braman, RPh, MS	Anne Zijac
Immediate Past Chair	Amanda Applegate, PharmD, BCACP	Brandan Kennedy, MD, FAAP, FABPM
Treasurer/Secretary	Kimberly Whitaker, RN	Sarah Good, MHA
Improved Systems Performance Team Chair	Sarah Good, MHA	
Policy Team Chair	Heather Braum, MLS	Shelby Ostrom, MPA
Education and Awareness Team Chair and Co-Chair	Elizabeth Morris, BSN, RN, CPN	Stephania Lopez, BS Elizabeth Morris, BSN, RN, CPN
Health Equity Team Chair	Jaclyn Miller, LMSW	Debbie Nuss
KDHE Representative	Jaime Gabel, MPH	Jaime Gabel, MPH
At Large	Stephania Lopez, BS (also served as E&A Team Co-Chair)	Amanda Applegate, PharmD, BCACP Edward Lyon, DO

Welcome New Officers! Meet Your 2025-2026 IKC Board

Karen Braman
Chair



INCOMING OFFICERS



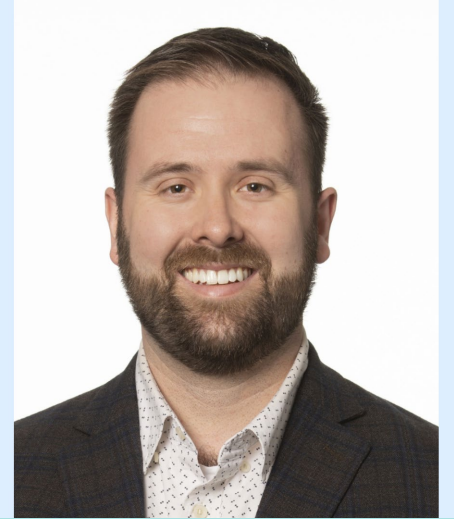
Chair-Elect
Anne Zijac



Policy Team Chair
Shelby Ostrom,
MPA



Health Equity Team Chair
Debbie Nuss



At-Large Representative
Edward (Eddie) Lyon,
DO

2025-2026 BOARD OF DIRECTORS



Chair

Karen Braman, RPh,
MS



Chair Elect

Anne Zijac



Immediate Past Chair

Brandan Kennedy,
MD, FAAP, FABPM



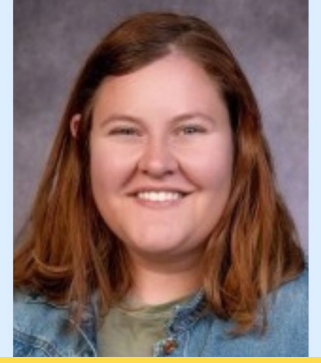
Secretary-Treasurer & Improved Systems Performance Team Chair

Sarah Good, MHA



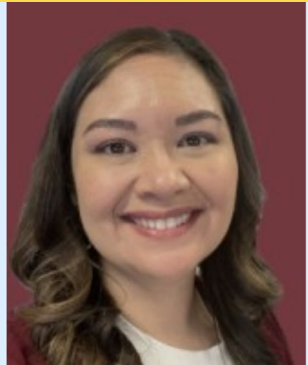
Health Equity Team Chair

Debbie Nuss



Policy Team Chair

Shelby Ostrom,
MPA



Education and Awareness Team Chair

Elizabeth Morris,
BSN, RN, CPN



Education & Awareness Co-Chair & At-Large

Stephania Lopez, BS



KDHE Representative

Jaime Gabel, MPH



At-Large

Amanda Applegate,
PharmD, BCACP



At-Large

Edward Lyon, DO



FISCAL AGENT UPDATE

Sarah Good

Secretary-Treasurer

HIGHLIGHTS OF IKC RESOURCES & ACTIVITIES

Please note: These are
just a few!
There is **so much more**
on our website and
shared on social media.



Looking Back Over the Year



Community Events



IKC Advocacy Day



Entre Mujeres Conference



Voices for Vaccines Summit in Atlanta, GA



Reach & Engagement Stats

July 1, 2024 – June 30, 2025 (unless otherwise noted)

155,288

Views on Facebook & Instagram*

**December 2024-June 2025*

153,134

Reached on social media

872

Posts on social media

5,610

Facebook and Instagram page visits

2,666



Total followers on social media



Facebook



Instagram



LinkedIn



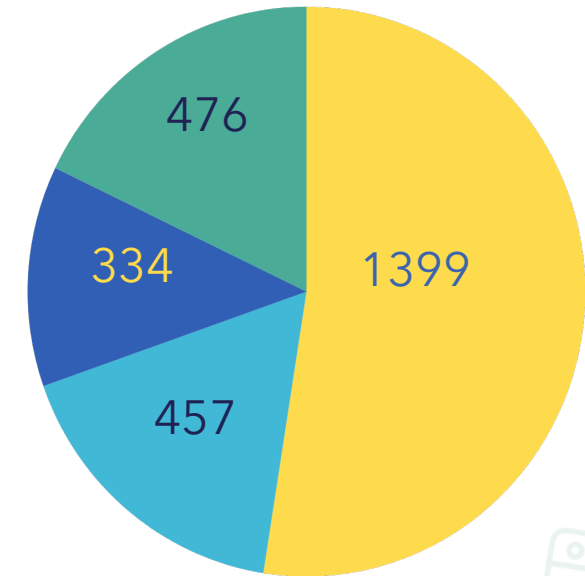
X (Twitter)

979

Email list subscribers

6,207

Digital resources downloaded by users



Website

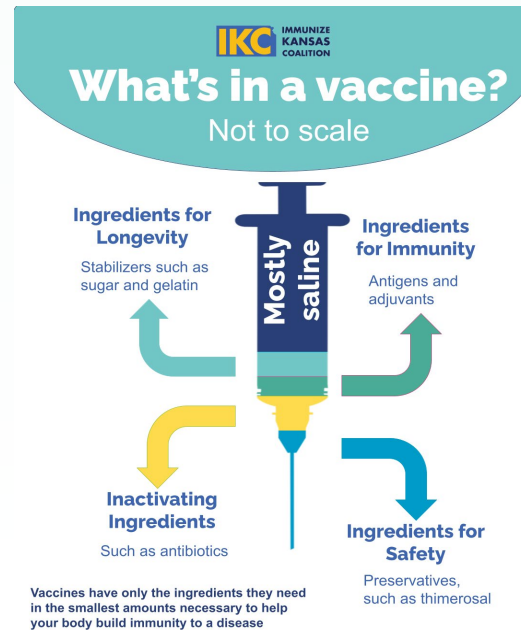
Visits: 72,301

Unique Visitors: 17,058

Most viewed page:

Measles/MMR webpage with 5,674 views

AUGUST IS National Immunization Awareness Month (NIAM) & Back-to-School Season



Do you have NIAM resources? Share them with us and we'll include them on our social media channels!

Join us in sharing about the importance of immunizations during the month of August! Share using our resources on IKC's National Immunization Awareness Month (NIAM) webpage.



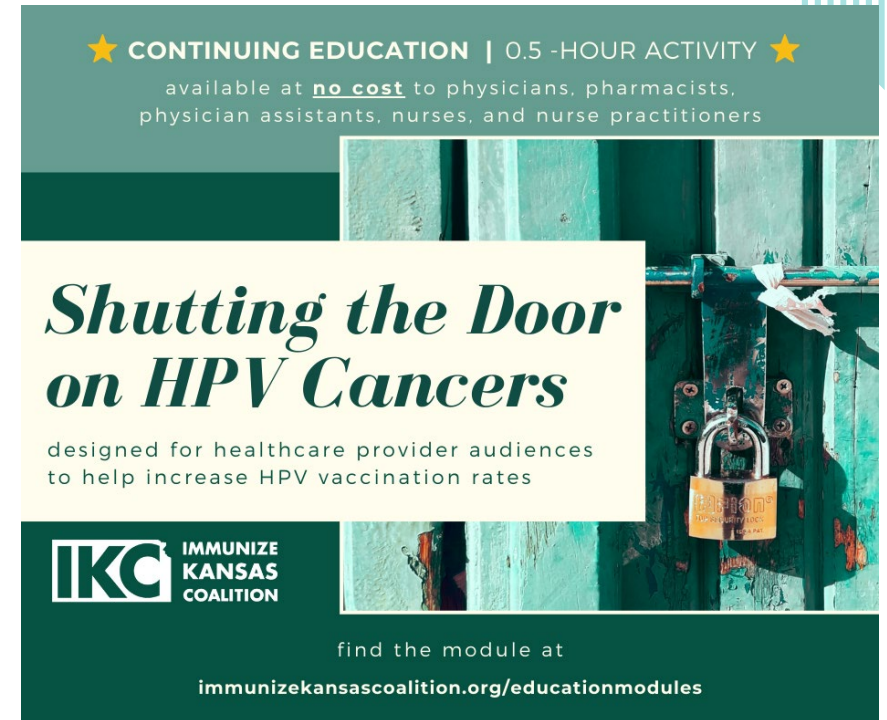
Shutting the Door on HPV Cancers Education Module

Make HPV vaccination part of every preteen & teens back-to-school wellness visit

Refresh your HPV vaccination knowledge. Learn how to:

- Explain why HPV vaccine is important enough to be routinely recommended for young people (i.e., HPV cancer prevention).
- Give an HPV vaccination recommendation that is effective and succinct using the same way, same day approach to the introduction of HPV vaccine.
- Answer the most frequently asked questions about HPV vaccine accurately and succinctly.

This is a 0.5-hour Continuing Education (CE) activity. CE is available for physicians, pharmacists, physician assistants, and nurse practitioners.



Measles/MMR Resource Page

Viewers will find:

- **Protect Against Measles Campaign** – includes downloadable flyers and social media graphics with ready-to-use captions
- **Ask A Doctor Video Series** – Kansas pediatricians answer frequently asked questions from parents
- **Interactive Outbreak Map** – shows current measles activity in Kansas and across the U.S.
- **Trusted Guidance** – resources tailored for both healthcare providers and parents
- **MMR Vaccine Recommendations** – up-to-date information on timing, dosing, and outbreak situations
- **...and more tools to support measles education and outreach!**



Ask a Doctor Video Series

- A series that consists of **short-format videos** designed for platforms like **Instagram, Facebook, TikTok, and YouTube**.
- Pediatricians address real questions that parents are asking, tackling **questions related to measles, the MMR vaccine, and vaccine safety**.
- Share with **parents** or the **public**!

?

DO VITAMIN A
SUPPLEMENTS HELP
PREVENT MEASLES?

?

I HAVE AN INFANT UNDER
12 MONTHS. CAN MY CHILD
GET AN EARLY DOSE OF
THE MMR VACCINE?



Diseases & Real-Life Consequences Card

- Highlights **15 vaccine-preventable diseases and their serious**, sometimes life-threatening **complications**
- Clear, easy-to-read format for **patients, parents, and public health outreach**
- Perfect for **clinics, schools, and community events**


Diseases & Real-Life Consequences

Diseases can leave lasting damage — vaccines help prevent it.

These infections... → can cause **real, long-term harm...**

Measles	→	Pneumonia, blindness, and death
Polio	→	Permanent paralysis
Mumps	→	Deafness
Hib <small>Haemophilus influenzae</small>	→	Pneumonia
Diphtheria	→	Damage to heart, kidneys, nervous system, and death
Tetanus	→	Nervous system damage and death
Rubella	→	Encephalitis (swelling of the brain), death, and serious birth defects*
Meningitis	→	Brain damage, deafness, loss of limbs, and death

*High-risk associated with pregnancy



HPV → Cancer
Human Papillomavirus

Whooping Cough → Pneumonia and death
Pertussis


Chickenpox → Pneumonia

Rotavirus → Severe diarrhea and dehydration

Flu → Pneumonia, bronchitis, and death
Influenza (Flu)


COVID-19 → Pneumonia

RSV → Pneumonia
Respiratory Syncytial Virus




Vaccines are our best defense against harmful diseases.

For information on these infections and the vaccines that prevent them, visit:



For educational resources and to connect with IKC, please visit:



Questions? Talk with a healthcare provider about the vaccines recommended for you.

IKC IMMUNIZE KANSAS COALITION
www.immunizekansascoalition.org



#KansasFightsFlu

Viewers will find:

- **Flu toolkits and messaging resources** for healthcare providers and public health outreach – *focusing on college students, pregnant women, adults, and more*
- **Flu surveillance** in Kansas and across the US
- **KDHE's Influenza Vaccine Dashboard**
- **Collegiate Flu Challenge** – *follow along as participating Kansas colleges raise the rates of flu vaccination on campus*
- **IKC's Preventing Flu Module**
- IKC received a **grant from Seqirus to advance flu outreach** and materials this fall
- And more!



KANSAS
fights FLU



2025 is IKC's 10th Anniversary!

Stay tuned for an opportunity to
help us recognize this milestone





KDHE KANSAS IMMUNIZATION PROGRAM UPDATE

Becky Prall & Allison Zaldivar

KDHE

United States Measles Data – As of July 29, 2025

U.S. Cases in 2025

Total cases

1333

Age

Under 5 years: **382 (29%)**

5-19 years: **491 (37%)**

20+ years: **453 (34%)**

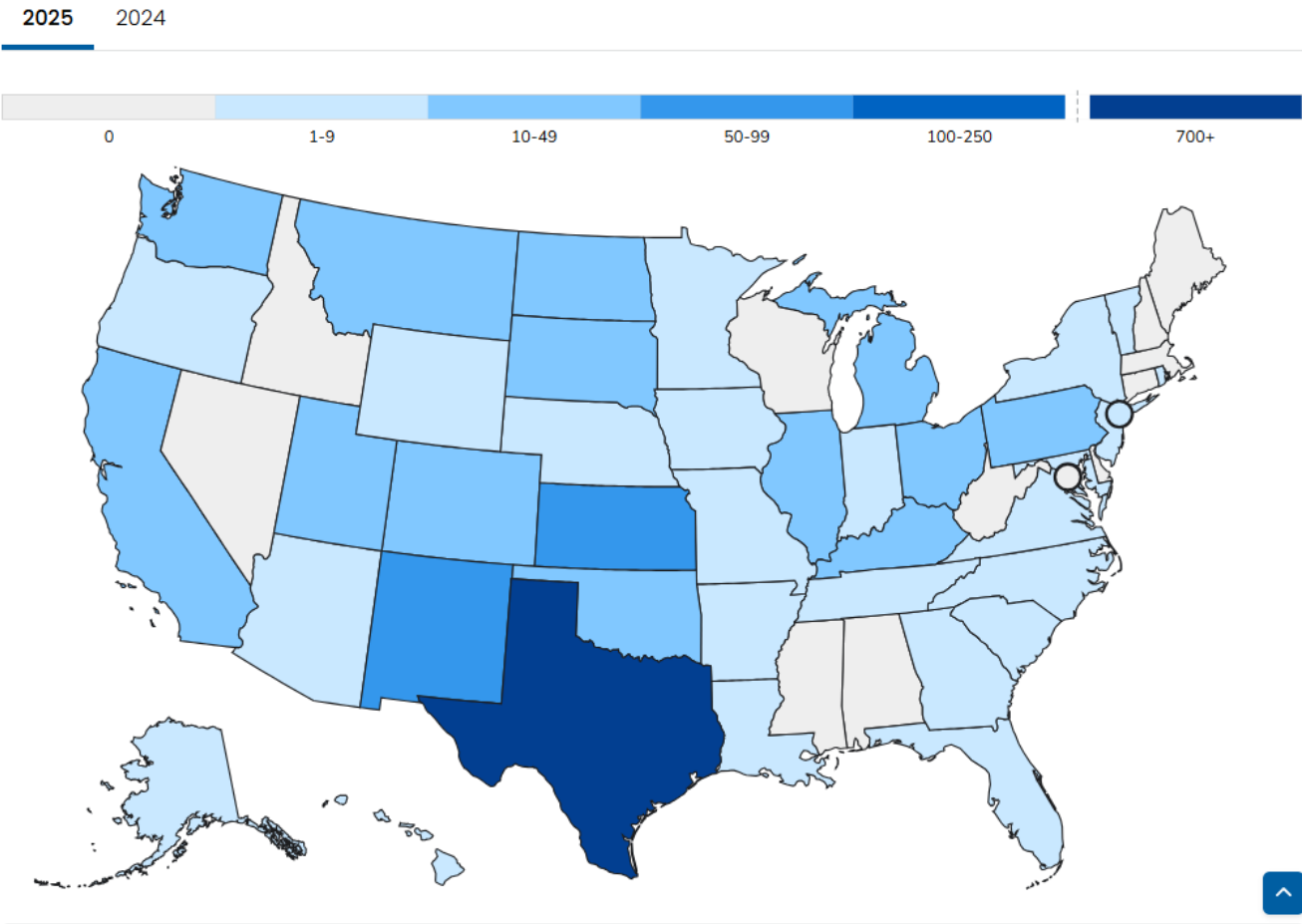
Age unknown: **7 (1%)**

Vaccination Status

Unvaccinated or Unknown: **92%**

One MMR dose: **4%**

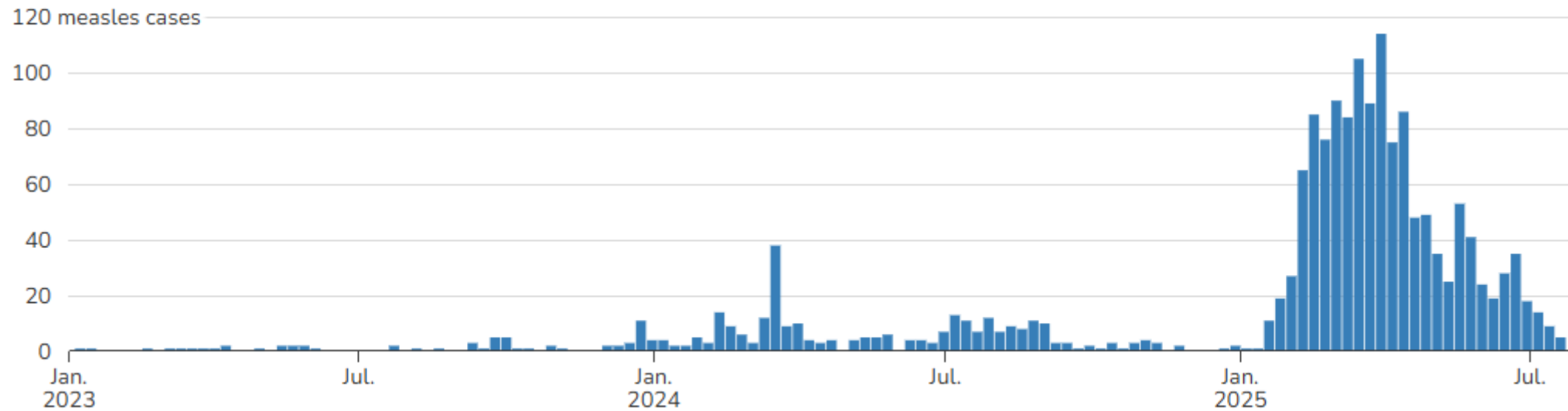
Two MMR doses: **4%**



United States Measles Data – As of July 29, 2025

Weekly measles cases by rash onset date

2023–2025* (as of July 29, 2025)



Kansas Measles Data – Statewide Kansas Overview

Statewide Measles Overview

County Maps of Cases & Totals

Public Exposure Locations

Southwest KS Outbreak Data

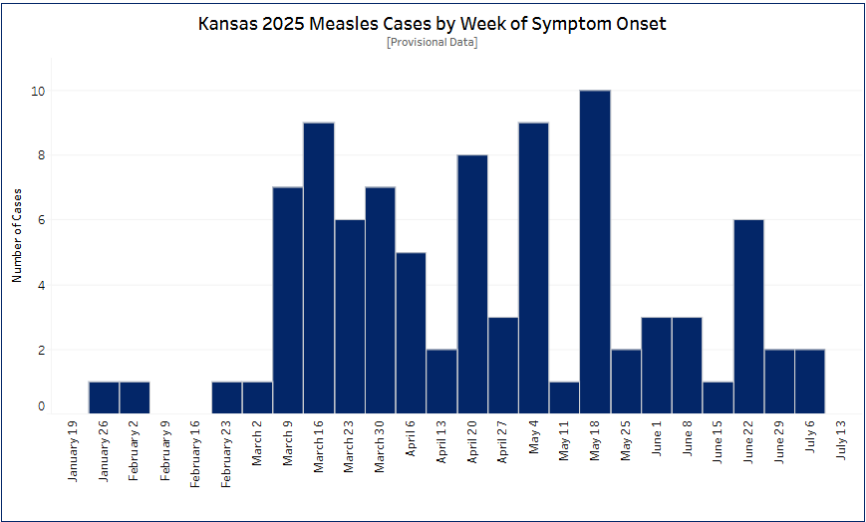
MMR Vaccine Guidance

2025 Kansas Measles Case Data

The Kansas Department of Health and Environment (KDHE) and Kansas local health departments are working together in response to an increase in measles cases in the United States. These are provisional case counts because of ongoing revision of information. Data are updated every Monday and Wednesdays, excluding state holidays. Data last updated Wednesday, Jul 30.

[7/23/2025 Correction Note](#)

2025 Total Cases	Rate Year-to-Date	Outbreak Associated	Counties with Cases
90	3.09 per 100,000 population	87	12



Kansas Measles Data – Southwest KS Outbreak Data

2025 Southwest Kansas Measles Outbreak Case Data

The Kansas Department of Health and Environment (KDHE) and Kansas local health departments are working together in response to a measles outbreak in southwest Kansas. As of Jul 30, 2025, a total of 87 cases have been reported and associated with the Southwest Kansas outbreak. The case counts are provisional and may change as cases are investigated by public health. The outbreak will be declared over after 42 days (two incubation periods) with no new cases. The dashboard will be updated every Monday and Wednesday, excluding state holidays.

Outbreak Cases

87

Outbreak Cases by Age Group	
[Provisional Data]	
Age Group (Years)	Cases
0-4	37
5-10	22
11-13	5
14-17	6
18-24	3
25-34	7
35-44	4
45-54	3
55-64	0
65-74	0
75-84	0
85+	0
Pending	0
Total Outbreak Cases	87

Outbreak Hospitalizations

8

Outbreak Cases by Vaccine Status	
[Provisional Data]	
Status	Cases
Age Appropriately Vaccinated	7
Not Age Appropriately Vaccinated	1
Not Vaccinated	75
Unable to Verify	4
Pending Verification	0
Total Outbreak Cases	87

Outbreak Deaths

0

Outbreak Counties

10

Outbreak Cases by County		
[Provisional Data]		
County	Days Since Last Case	Cases
Finney County	More than 42 days	1-5
Ford County	More than 42 days	1-5
Grant County	More than 42 days	1-5
Gray County	Less than 42 days	29
Haskell County	Less than 42 days	19
Kiowa County	More than 42 days	6
Morton County	More than 42 days	1-5
Pawnee County	More than 42 days	7
Seward County	More than 42 days	1-5
Stevens County	Less than 42 days	10

When there are fewer than six reported cases in a county, the exact number is not shown—instead, a range of 1-5 is displayed. This practice helps protect the privacy of individual patients by ensuring that very small case numbers, which could potentially identify someone, remain confidential.

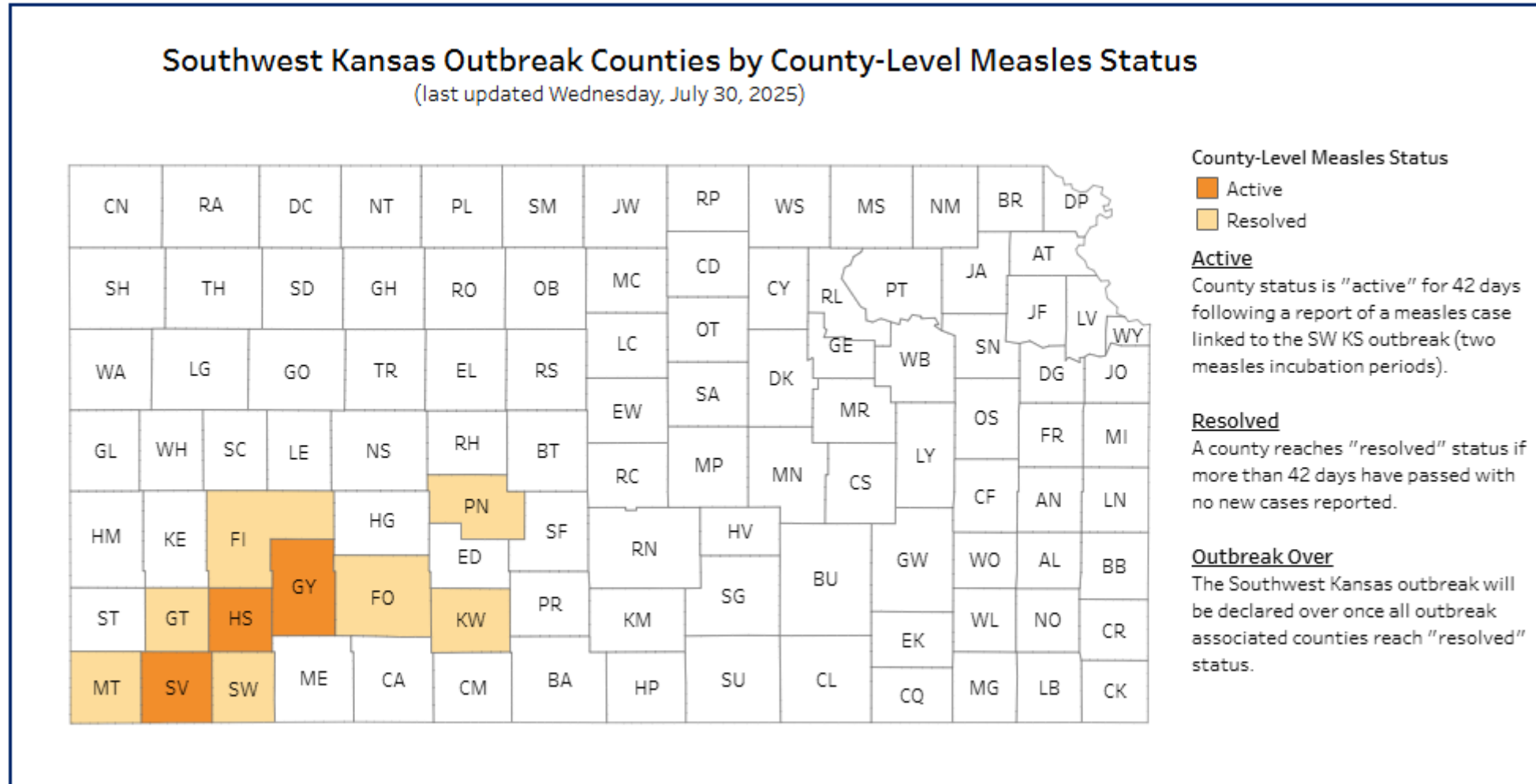
Most cases among patients **younger than 11 years** (n=59, 68%)

Majority of cases among **unvaccinated individuals** (n=75, 86%)

Majority of cases **reside in Gray** (n=29, 32%) followed by **Haskell** (n=19, 22%)

Eight hospitalizations reported

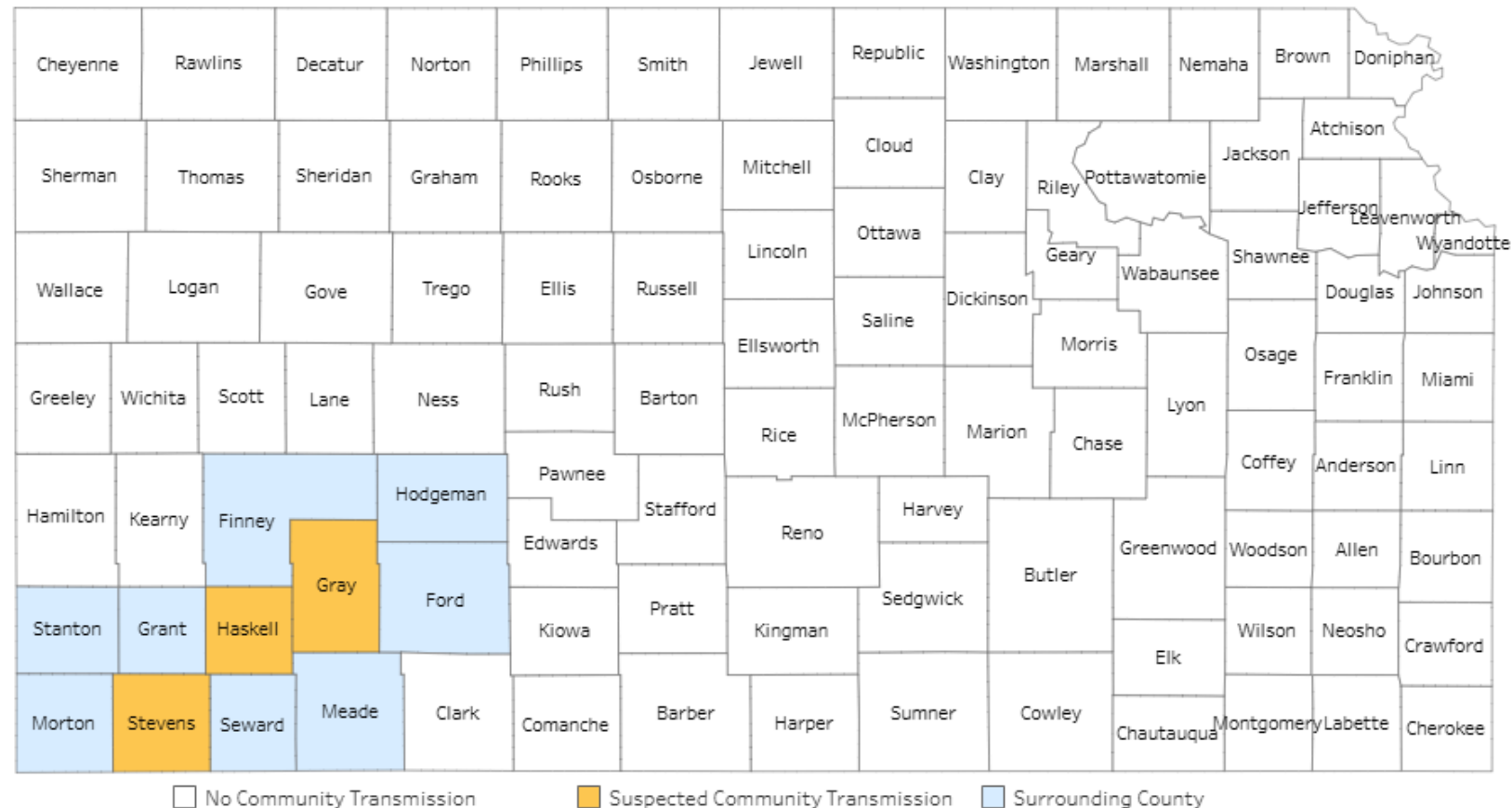
Kansas Measles Data – County Maps of Cases & Total



Kansas Measles Data – MMR Vaccine Guidance

Kansas Measles Outbreak Counties with Suspected Community Transmission and Surrounding Counties for Community Transmission MMR Vaccine Recommendations

(last updated Wednesday, July 30, 2025)



Kansas Measles Data – Public Exposure Locations

<

Statewide Measles Overview

County Maps of Cases & Totals

Public Exposure Locations

Southwest KS Outbreak Data

MMR Vaccine Guidance

>

Measles Public Exposure Locations

The Kansas Department of Health and Environment (KDHE) and local health departments continue to respond to measles cases in Kansas. KDHE is notifying the public of measles exposures in places where contacts cannot be identified so that anyone present at the date and times listed below can take the appropriate steps to protect their health and limit the spread of measles. **The risk of exposure to measles is limited only to the location, date, and times below.** Exposure locations will be added whenever new public locations are identified.

KDHE Measles Resources

[Home](#) › [Programs & Services](#) › [Division of Public Health](#) › [Disease & Injury Prevention](#)
› [Epidemiology & Public Health Informatics](#) › [Infectious Disease Epidemiology & Response](#)
› [Disease Information](#) › [Vaccine-Preventable Diseases](#) › Measles

Measles (Rubeola)

Cases in Kansas

Due to the highly contagious nature of measles, additional cases are likely to occur in the outbreak area in Kansas and in surrounding counties especially among those that are unvaccinated. Find the number of Kansas measles cases on the [Reportable Infectious Disease Statistics Dashboard](#). For more information on the 2025 Kansas measles outbreak, visit the [Kansas Measles Outbreak Dashboard](#).

Overview

Symptoms

Complications

Prevention

Learn More About Measles

Measles is caused by a virus that spreads easily from person to person. It is an airborne disease, meaning it spreads through the air when an infected person breathes, coughs, sneezes, or talks. **The virus can stay alive in the air and on surfaces for up to two hours.** Thankfully, two doses of Measles, Mumps, and Rubella (MMR) vaccine can almost always prevent measles.

Measles, also called rubeola, causes a rash, fever, sore throat, body aches, and headache. Common complications of measles include ear infections, pneumonia, croup, and diarrhea. But measles is more than just a rash—it can lead to serious problems like brain inflammation, pneumonia, and other infections. Even healthy children can become

Contact Us

Report Suspect Cases

Call 877-427-7317, option 5

General Questions

- Call 1-866-KDHEINF (1-866-534-3463)
- [Email the Epi Hotline](#)
- Monday-Friday: 8am-5pm

Media Inquiries

[Email KDHE Communications](#)



Find Vaccines



Kansas Immunization Records Request



School & Child Care Vaccines

KDHE Resources

- [Timeline for Measles Exposure, Symptom Onset, and Disease Spread](#)
- [Exam Room Closed Sign \(PDF\)](#) - New
- [Get Your Clinic Ready for Measles Flyer \(PDF\)](#) - New
- [Measles Rash Book \(PDF\)](#)
- [Measles Rapid Assessment Form \(PDF\)](#)
- [Measles Guidelines for EMS \(PDF\)](#)
- Measles Warning Poster - 8.5 x 11 in. (PDF): [English](#) | [Spanish](#) | [Low German](#) | [Haitian Creole](#) | [Pashto](#) | [Rohingya](#) | [Somali](#) | [Swahili](#)
- Measles Warning Poster - 11 x 17 in. (PDF): [English](#) | [Spanish](#) | [Low German](#) | [Haitian Creole](#) | [Pashto](#) | [Rohingya](#) | [Somali](#) | [Swahili](#)
- **KDHE Vaccination Resources**
 - MMR Vaccine Recommendations Flyer (PDF) - **Updated 5/20/25:** [English](#) | [Spanish](#) | [Low German](#) | [Haitian Creole](#) | [Pashto](#) | [Rohingya](#) | [Somali](#) | [Swahili](#)
- **KHEL Laboratory Resources**
 - [Measles RT-PCR Testing Guidance for Public Health Partners \(PDF\)](#)
 - [LabXChange Ordering Guide \(PDF\)](#)
- **Local Health Department Investigation Resources**
 - [Measles Disease Investigation Guidelines for Local Health Departments \(PDF\)](#)
 - [Measles Line List Template \(XLSX\)](#)
 - [Measles Outbreak Investigation Form for Public Health Partners \(PDF\)](#)

KDHE Measles Resources

FAQs

Provider Resources

Toolkit

Measles Toolkit

General Alert Flyer

- [Burmese Flyer \(PDF\)](#)
- [English Flyer \(PDF\)](#)
- [Low German Flyer \(PDF\)](#)
- [Somali Flyer \(PDF\)](#)
- [Spanish Flyer \(PDF\)](#)
- [Vietnamese Flyer \(PDF\)](#)

Measles is Spreading Flyer

- [Measles is Spreading Flyer \(PDF\)](#)

For Schools

- Exposure Notification Letter (DOCX): [English](#) | [Spanish](#) | [Low German](#)
- No Measles in School Letter (DOCX): [English](#) | [Spanish](#) | [Low German](#)
- Measles in County Letter (DOCX): [English](#) | [Spanish](#) | [Low German](#)
- [Schools Checklist \(DOCX\)](#)

Back to School Measles Prevention Social Media Messages

Text	Image / Graphic
<p>As we head into the school year, it's a great time to check if your child's vaccines are up to date.</p> <p>Measles cases have been reported in Kansas, and the MMR vaccine is one of the best ways to protect your child and those who can't get a vaccine.</p>	
<p>Have questions about the MMR vaccine? Your local health department or health care provider can answer your questions, explain what protection the vaccine provides, and confirm if it is recommended for your child.</p>	
<p>Measles spreads fast. Vaccinating your child helps stop the spread and protect your community.</p> <p>Let's work together to keep Kansas families healthy this school year.</p>	
<p>Like school supplies, vaccines are a part of getting ready for a new school year.</p> <p>Contact your local health department or health care provider to get ready.</p>	

Measles Social Media Toolkit

The Kansas Department of Health and Environment curated these graphics and sample posts to increase awareness of measles and the measles, mumps, and rubella (MMR) vaccine recommendations.

Image(s)	Message
	<p>Measles is an airborne, highly contagious disease. Symptoms include a cough, runny nose, fever, red/watery eyes, and rash. Learn more about next steps for protecting you and your family from measles: https://www.cdc.gov/measles/index.html.</p>
	<p>You have the power to protect your children against measles. It is recommended children receive two doses of the vaccine. The first dose should be administered at age 12-15 months and the second dose at age 4-6 years. Learn more about vaccine recommendations: https://www.cdc.gov/vaccines/vpd/mmr/hcp/recommendations.html.</p>
	<p>Nearly 1 out of 5 people who get measles will be hospitalized, but you have the power to protect yourself and your child. Learn more about the recommended vaccines: https://www.cdc.gov/measles/vaccines/index.html.</p>
	<p>Measles typically begins with a cough, runny nose and red eyes. These symptoms can become worse over time and lead to a rash and high fever. Make sure to watch out for more serious symptoms such as:</p> <ul style="list-style-type: none"> Difficulty breathing or breathing faster than normal Signs of severe dehydration Confusion, decreased alertness or severe weakness For young children: blue color around the mouth, tearless-crying, unusually low energy or severe loss of appetite <p>If you suspect you or your family have the measles, seek medical care immediately.</p>

CDC's *Be Ready for Measles* Toolkit

- Toolkit meant for public health professionals to use when preparing for or responding to measles cases.
- Information included:
 - Sample letters, line lists, and investigation forms
 - Fact sheets, flyers, and social media graphics
 - Information for providers



ACIP Meeting and Recommendations

ATLANTA—JUNE 26, 2025—The Centers for Disease Control and Prevention's (CDC) Advisory Committee on Immunization Practices (ACIP) held a meeting on Wednesday and Thursday, June 25-26, 2025, at CDC headquarters in Atlanta, Georgia. The ACIP comprises leading medical and public health experts who advise the CDC on the safety, effectiveness, and clinical necessity of vaccines. The ACIP voted:

- To approve, by a vote of five to two, one dose of clesrovimab, a monoclonal antibody for infants whose mothers are not protected by maternal respiratory syncytial virus (RSV) vaccination. Clesrovimab is one of two RSV monoclonal antibody products available.
- To approve, by a vote of seven to zero, the updated Vaccines for Children Program resolution for prevention of RSV.
- To reaffirm recommendation, by a vote of six to zero, for routine annual influenza vaccination of all persons aged over six months who do not have contraindications.
- To recommend, by a vote of five to one, for children 18 years and younger to receive seasonal influenza vaccines only in single-dose formulations that are free of thimerosal as a preservative.
- To recommend, by a vote of five to one, that pregnant women receive seasonal influenza vaccines only in single-dose formulations that are free of thimerosal as a preservative.
- To recommend, by a vote of five to one, that all adults receive seasonal influenza vaccines only in single-dose formulations that are free of thimerosal as a preservative.

[CDC's Advisory Committee on Immunization Concludes Meeting with Joint Statement | CDC Newsroom](#)

Nirsevimab Early Orders for VFC Providers

Important Ordering Information:

- Orders open August 1, 2025, in KSWebIZ.
- The CDC is allocating doses to Kansas in phases. New supply will arrive every two weeks.
- To ensure fair and appropriate distribution, providers may receive fewer doses than requested if large quantities are ordered.
- Please order only the doses needed for your eligible population. Over-ordering may result in expired or wasted doses, which impacts the entire program's availability and sustainability.
- Nirsevimab is currently recommended to be administered from October through March.

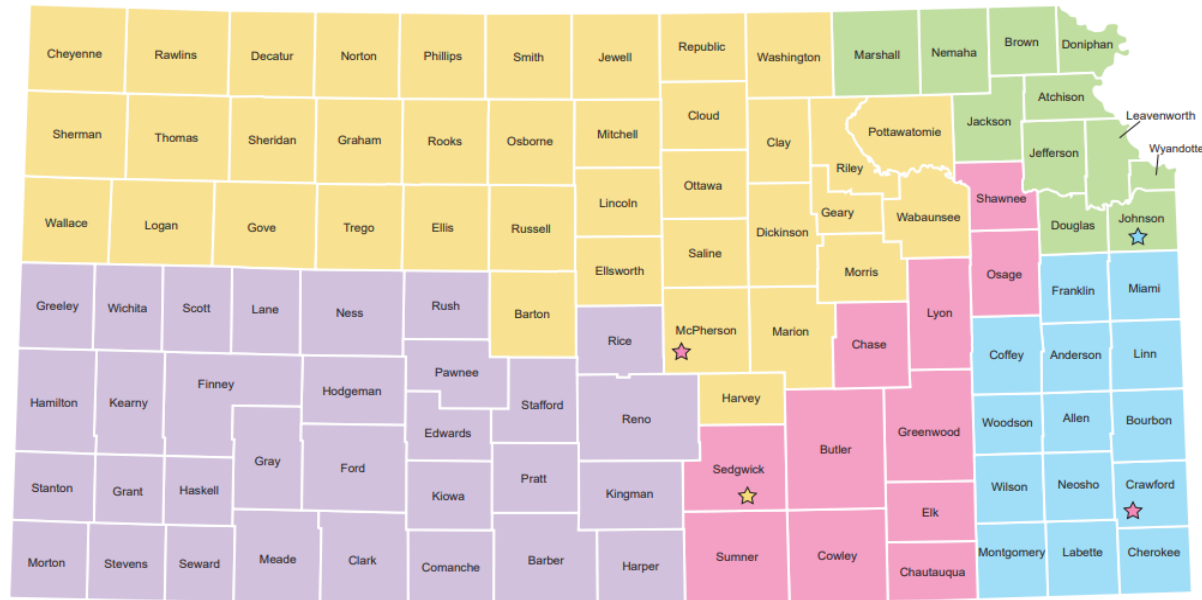
Regional Immunization Nurse Updates

Questions:

KDHE.ImmConsultant@ks.gov

877-296-0464

Kansas Immunization Program - Regional Immunization Nurse Assignments



Region 1
Rene' Matuse
Rene.Matuse@ks.gov
785-289-7410
★ Sedgwick 6044

Region 2
Melody Couper
Melody.Couper@ks.gov
785-471-0083

Region 3
Dena Rueb
dena.rueb@ks.gov
785-250-3292

Region 4
Sarah Miller
Sarah.Miller@ks.gov
785-471-0091
★ Crawford 0019
McPherson 6489

Region 5
Krissi O'Dell
Krissi.odell@ks.gov
785-260-4541
★ Johnson 6433,6474

June 2025

If your Regional Nurse can't be reached, please contact the Immunization Nurse On-Call at KDHE.ImmConsultant@ks.gov or 877-296-0464.

Regional Immunization Nurse County Map June 2025

To protect and improve the health and environment of all Kansans



IMMUNIZATION POLICY UPDATE

Shelby Ostrom

IKC Policy Team Chair

Federal

- The Senate committee approved CDC Director candidate Dr. Susan Monarez; she will still need to be confirmed by the full senate
- Secretary Kennedy dismissed all ACIP members and replaced them with known vaccine skeptics
- Removed thimerosal from yearly flu vaccines; could impact availability as flu vaccines have already been produced
- HHS/ACIP removed recommendation for children and pregnant people to get COVID-19 vaccines; concerns over VFC and other insurance carriers covering them
- On June 7th, Secretary Kennedy hired David Geier to review vaccine safety data. Geier is an anti-vaccine activist; more information to come on this issue.
- MAHA Report: several non-attributable references and most likely written by AI
- ACIP adopted recommendations for RSV vaccines for older adults and a new meningococcal vaccine after a two-month delay
- PRWORA Notice from HHS went out in July. This document outlined the interpretation changes for “federal public benefits”. Does not currently impact vaccines, but COULD in the future

State

- KDHE staff cuts; direct changes to immunization program
- Funding shifts for public health and vaccines
- Office of Early Childhood legislation went into effect on July 1

Great places to get information

- Your Local Epidemiologist
- Center for Science in the Public Interest
- Vaccinate Your Family
- Voices for Vaccines

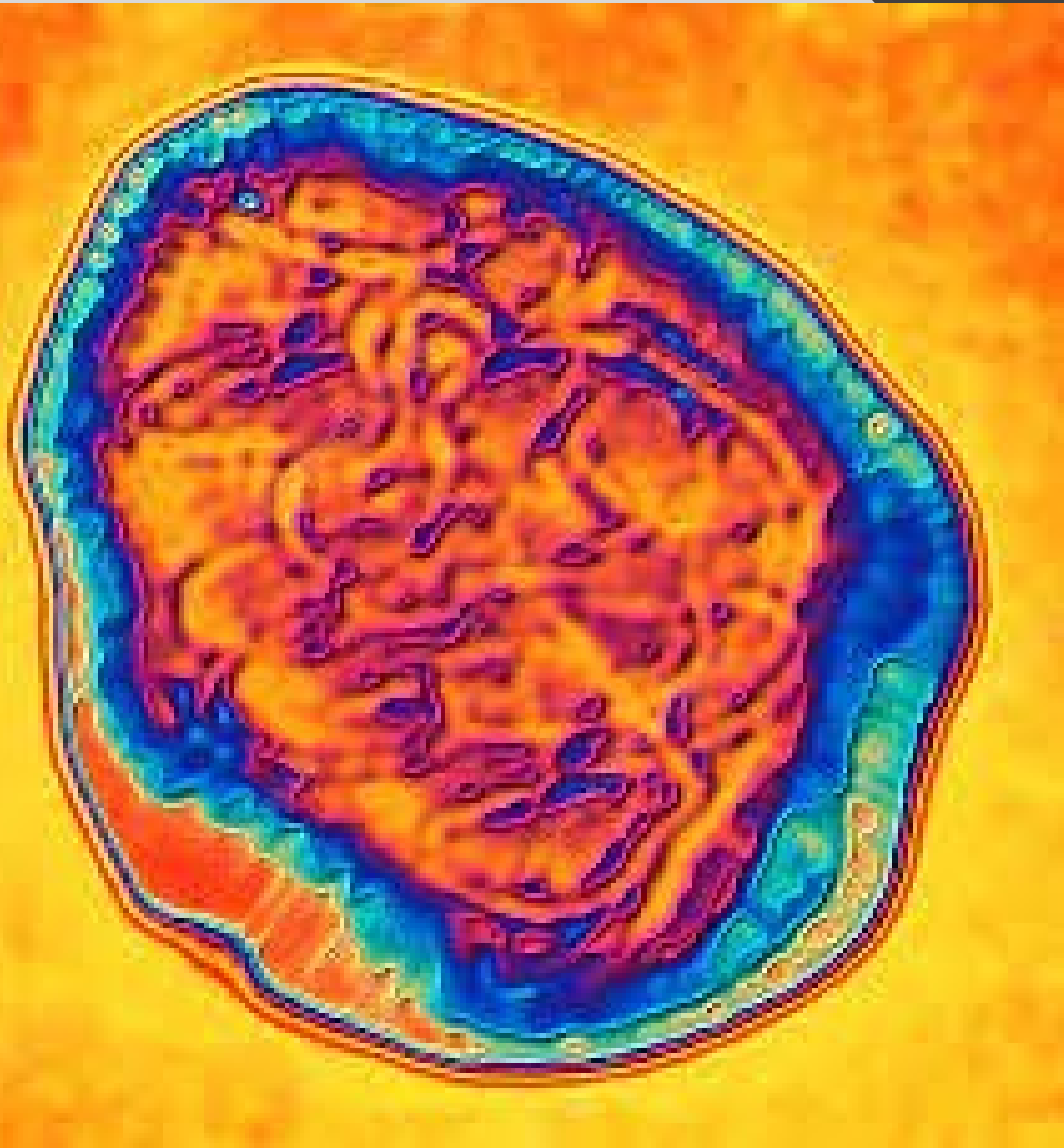


Clinical Perspective on the State of Immunizations and Vaccine-Preventable Diseases

Brandan Kennedy
Immediate Past Chair

Immunize Kansas Coalition Clinical Status Update

Brandan Kennedy, MD,
Clinical Professor of Pediatrics
Pediatric Hospitalist and Clinical Informaticist



Measles Update

As of July 22, 2025, a total of 1,319 confirmed* measles cases were reported by 40 jurisdictions: Alaska, Arkansas, Arizona, California, Colorado, Florida, Georgia, Hawaii, Illinois, Indiana, Iowa, Kansas, Kentucky, Louisiana, Maryland, Michigan, Minnesota, Missouri, Montana, Nebraska, New Jersey, New Mexico, New York City, New York State, North Carolina, North Dakota, Ohio, Oklahoma, Oregon, Pennsylvania, Rhode Island, South Carolina, South Dakota, Tennessee, Texas, Utah, Vermont, Virginia, Washington, and Wyoming.

There have been 29 outbreaks reported in 2025, compared to 16 outbreaks during 2024

Kansas as of July 30th, 90 cases in 12 counties confirmed.

Measles in Canada

- 4,200 measles cases so far this year
 - Very high vaccine hesitancy in Alberta
 - Canada's vaccine rate against measles in 2021 was 79%. Alberta 71%.
-
- **Impact:**
Alberta has 1600 recorded cases in a population of 5 million people. If US measles vaccination rates drop to this level this would translate to a possible 544,000 cases in our population of 340 million people!



What can we do?

ACIP (Advisory Committee on Immunization Practices) was formed in 1972 as an independent panel of experts to educate the federal government on vaccines. The committee —composed of experts including pediatricians, geriatricians, infectious disease doctors, immunologists and vaccinologists...all members fired by RF Kennedy, with about ½ of the replacements known to be vaccine skeptics

The American Academy of Pediatrics has called the new ACIP members a “[radical departure](#)” from the committee’s mission of protecting kids.

The Center for Infectious Disease Research and Policy (CIDRAP) at the University of Minnesota considering new vaccine integrity project outside government.

CIDRAP is now consulting with multiple medical organizations and public health groups — including the AAP, the American Academy of Family Physicians, the American College of Physicians, the American Pharmacists Association, the National Foundation for Infectious Diseases, as well as insurance providers — to discuss vaccine recommendations.

AAP files law suit against RF Kennedy over vaccine policies





What Can we do?

- Nationally: The American Academy of Pediatrics recently updated their Policy statement on July 28, 2025: **Medical vs Nonmedical Immunization Exemptions for Child Care and School Attendance: Policy Statement**
- Regionally: Continue to collaborate with our local medical organizations including the Kansas Department of Health and Environment, Kansas Hospital Association, The Kansas Chapter of the AAP, and many other community partners in Advocacy and driving change
- Locally: Continue to educate our community through collaboration, education, social media, and conversation with friends and neighbors with resources to address the myths around vaccines

• **WE NEED YOU !!!!**

Questions?





PARTNER SHARING AND COALITION DISCUSSION

- How are you navigating the updated approach to immunizations by the CDC and HHS?
- How are you promoting MMR vaccines and sharing about measles through your organization or in your community?
- What is everyone doing for back-to-school and national immunization awareness month (NIAM)?
- Other immunization resources, successes, or challenges you would like to highlight or discuss with this group



Reminders & Closing

Karen Braman
Chair

Next Meeting
Friday, Nov. 7, 2025
9:30 a.m.
Virtual